

4

3

2

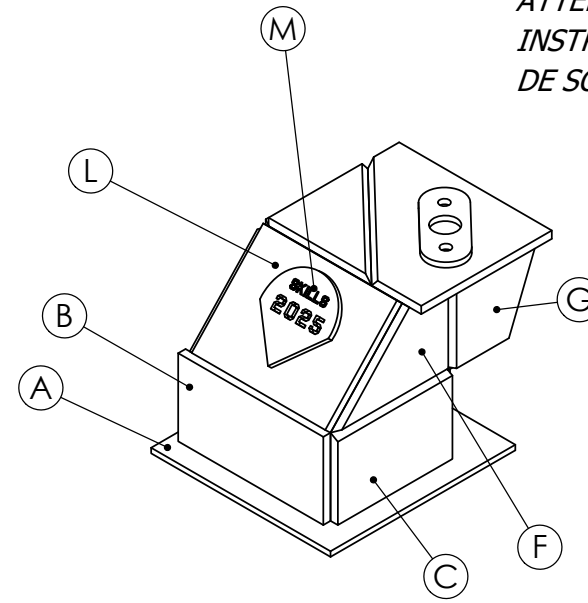
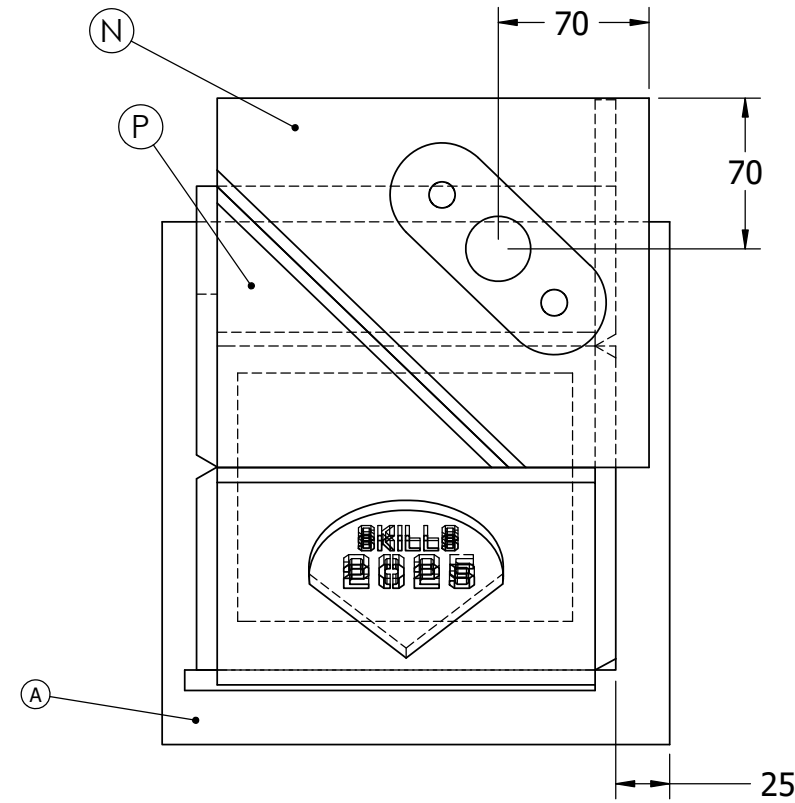
1

ITEM	QTY / QTE	T / ÉP.	W / LARGEUR	L / LONGEUR
A	1	6.35	235	242
B	1	9.53	100	190
C	1	9.53	100	150
D	1	6.35	94	175
E	1	6.35	74	175
F	1	9.53	100	150
G	1	9.53	100	114
H	1	6.35	48	120
J	1	9.53	94	200
K	1	9.53	130	200
L	1	9.53	137	175
M	1	6.35	90	100
N	1	9.53	171	200
P	1	9.53	130	135

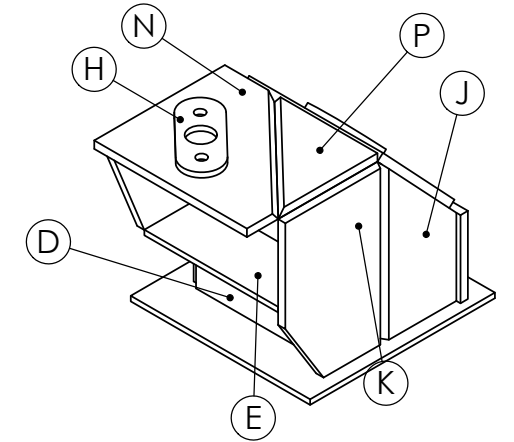
TOTAL ESTIMATED WEIGHT BEFORE WELDING /
ESTIMATION DU POIDS AVANT SOUDAGE (KG):
14.8 KG

ATTENTION! PLEASE SEE IMPORTANT ASSEMBLY
AND WELDING INSTRUCTIONS ON PAGE 2

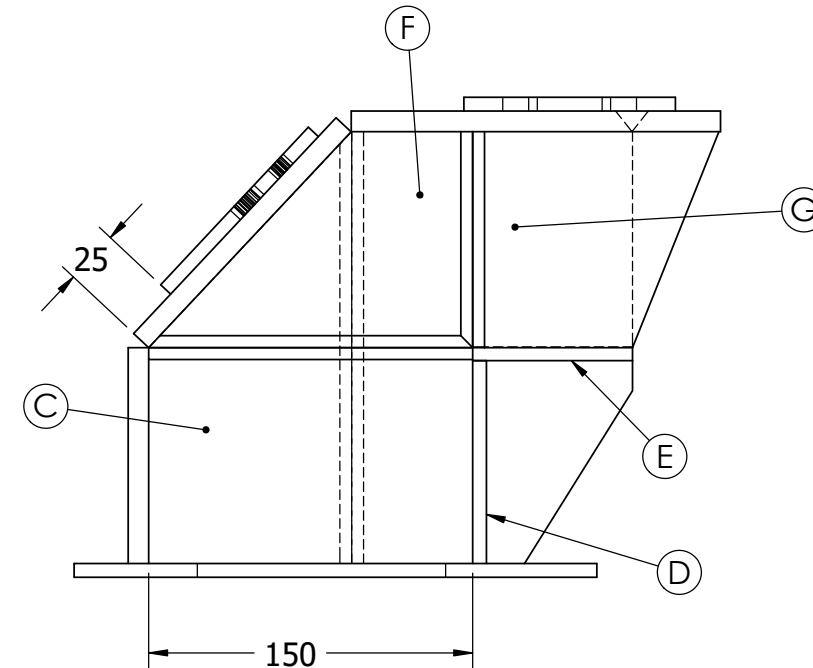
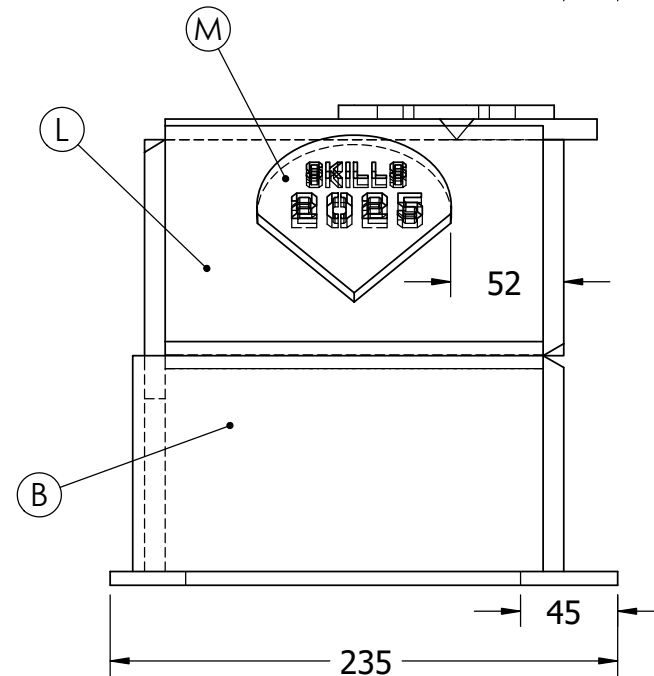
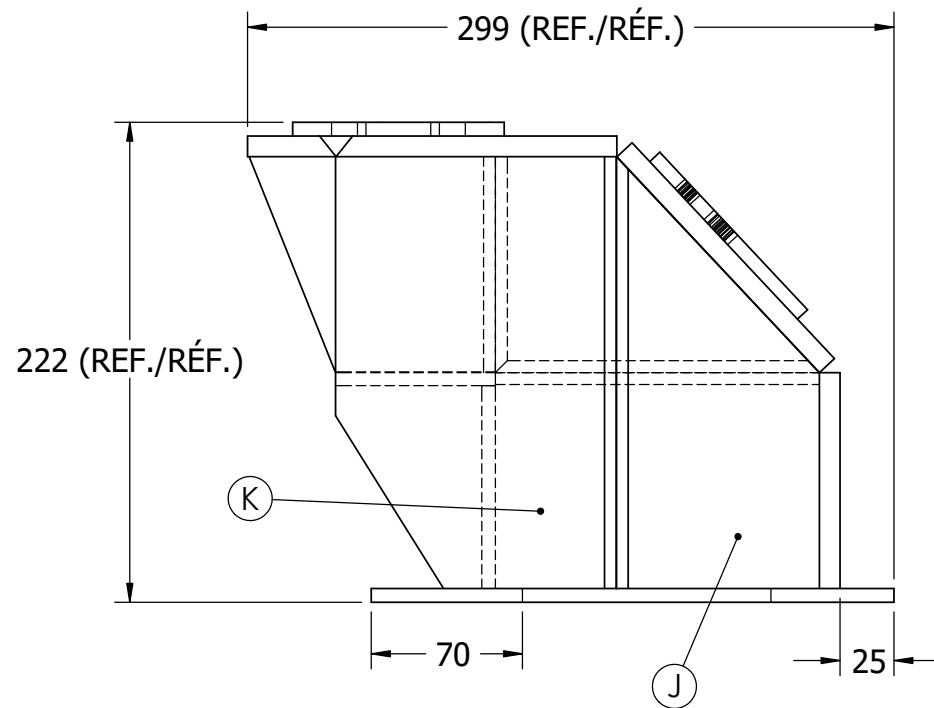
ATTENTION! VEUILLEZ CONSULTER LES
INSTRUCTIONS IMPORTANTES D'ASSEMBLAGE ET
DE SOUDAGE À LA PAGE 2



VIEW A / VUE A
SCALE 1:7

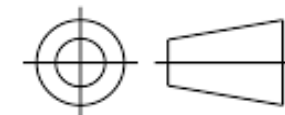


VIEW B / VUE B
SCALE 1:7



ALL DIMENSIONS IN MILLIMETERS/TOUTES LES DIMENSIONS SONT EN MILLIMÈTRES

TITLE / TITRE: SKILLS COMPÉTENCES ONTARIO 2025 POST-SECONDARY / POST-SECONDAIRE BOSS BOX / BOÎTE DE BOSS		SHEET # NO. DE PAGE: 1 OF 3	SIZE / TAILLE: B
DWG. NO. / NO DESSIN: SOC25-PS1	REV.: 0	SCALE ÉCHELLE: 1:3.5	DRAWN BY / DESSINÉ PAR: J. HYDE DATE: 2024-10-15



3

2

1

4

3

2

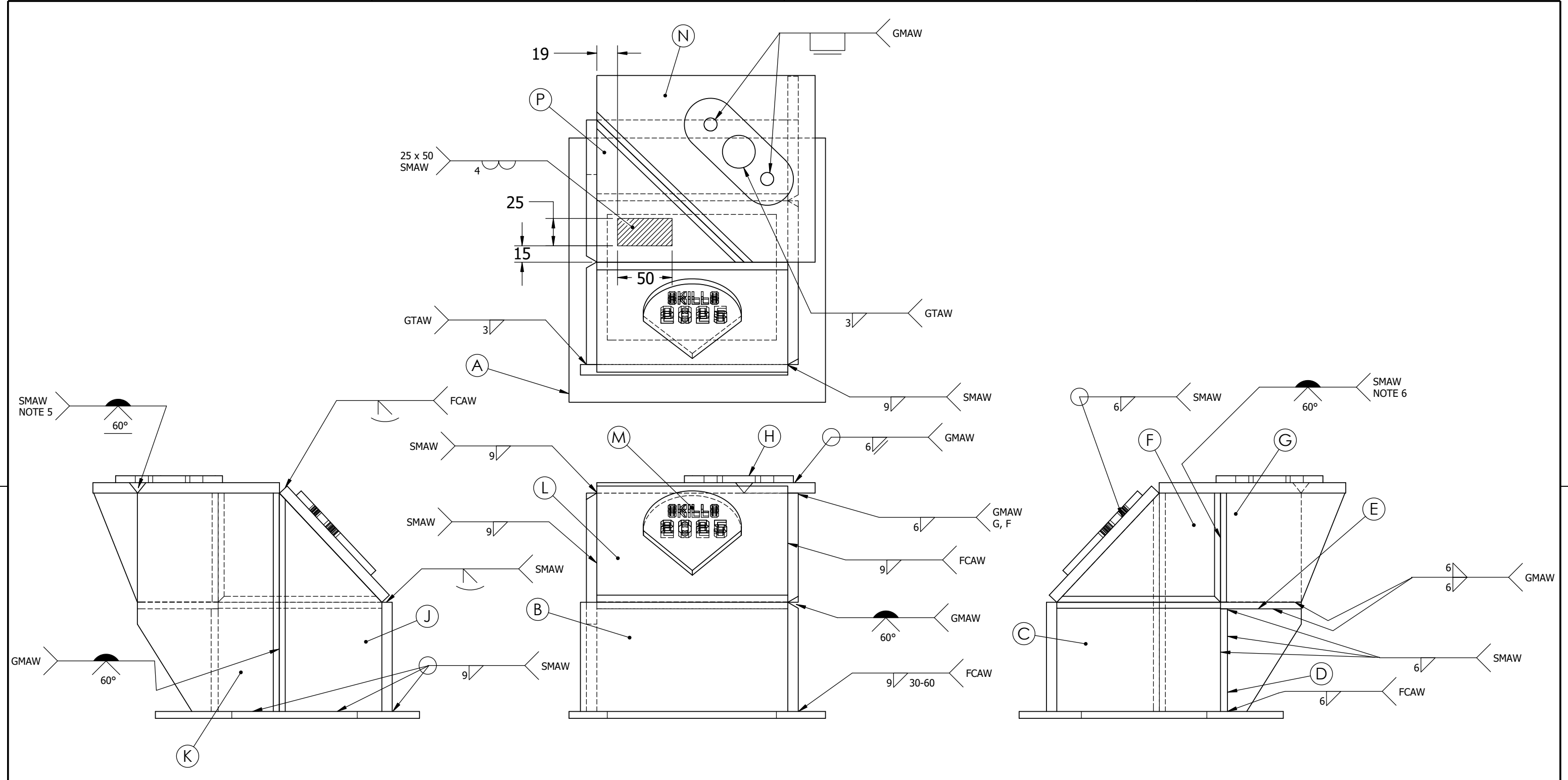
1

B

B

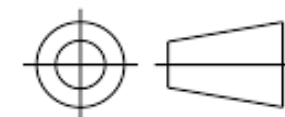
A

A



ALL DIMENSIONS IN MILLIMETERS/TOUTES LES DIMENSIONS SONT EN MILLIMÈTRES

TITLE / TITRE: SKILLS COMPÉTENCES ONTARIO 2025 POST-SECONDARY / POST-SECONDAIRE BOSS BOX / BOÎTE DE BOSS		SHEET # NO. DE PAGE: 2 OF 3	SIZE / TAILLE: B
DWG. NO. / NO DESSIN: SOC25-PS1	REV.: 0	SCALE ÉCHELLE: 1:3.5	DRAWN BY / DESSINÉ PAR: J. HYDE DATE: 2024-10-15



3

2

1

4

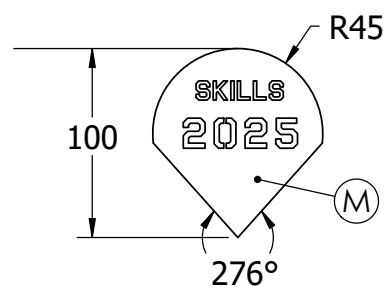
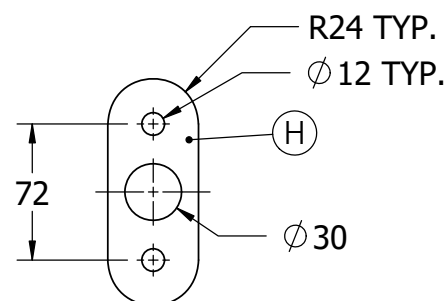
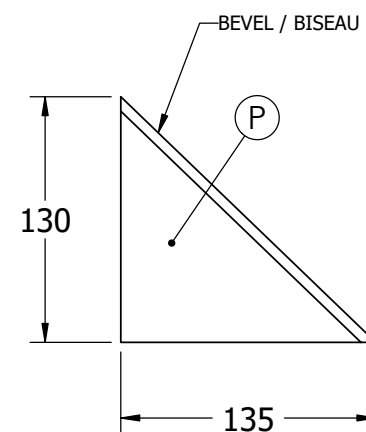
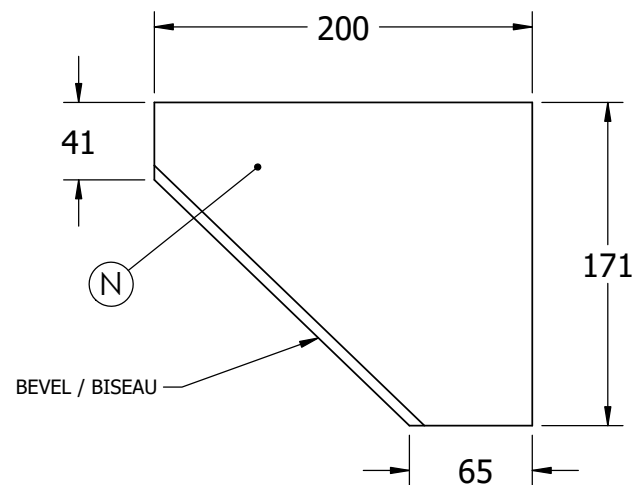
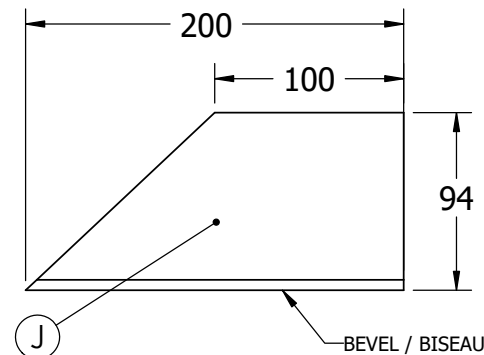
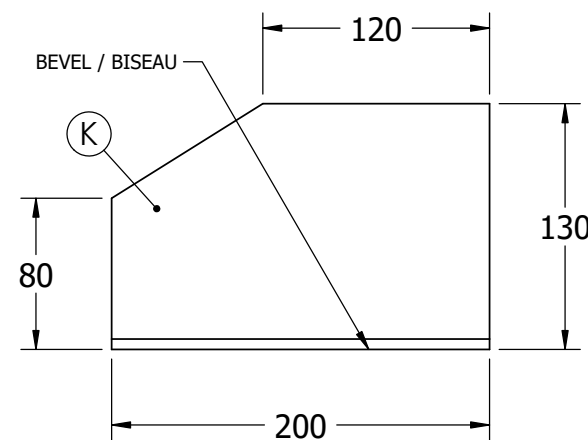
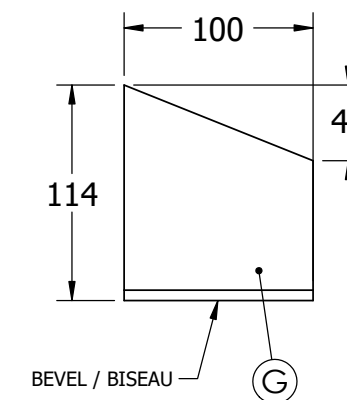
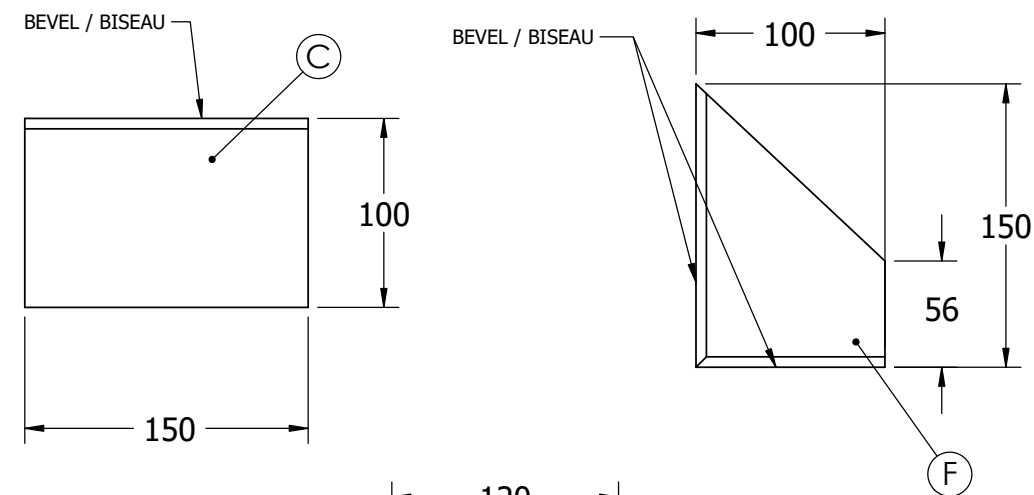
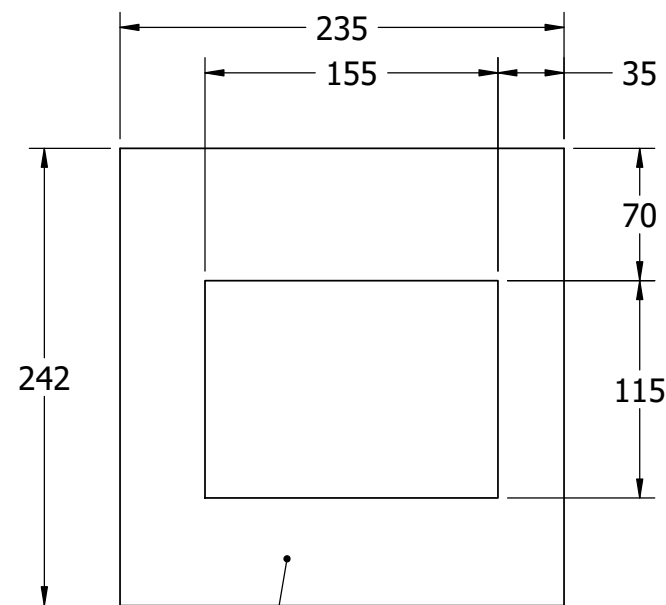
3

2

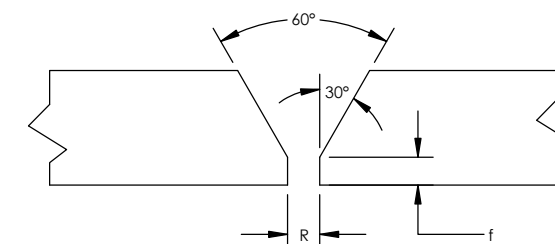
1

ITEM	QTY / QTÉ	T / ÉP.	W / LARGEUR	L / LONGEUR
A	1	6.35	235	242
B	1	9.53	100	190
C	1	9.53	100	150
D	1	6.35	94	175
E	1	6.35	74	175
F	1	9.53	100	150
G	1	9.53	100	114
H	1	6.35	48	120
J	1	9.53	94	200
K	1	9.53	130	200
L	1	9.53	137	175
M	1	6.35	90	100
N	1	9.53	171	200
P	1	9.53	130	135

TOTAL ESTIMATED WEIGHT BEFORE WELDING /
ESTIMATION DU POIDS AVANT SOUDAGE (KG):
14.8 KG



**PREPARED GROOVE DIMENSIONS /
DIMENSIONS DES RAINURES PRÉPARÉES**



* = ALL BEVEL AND VEE PREPARATIONS AS FOLLOWS:
* = PRÉPARER TOUTES LES SOUDURES EN V ET EN BISEAU
COMME CECI :

R and f are prepared to the preference of the competitor.
The dimension for the plates shown is to a feathered edge and
any root gap must be accommodated in overall fitting dimensions.

R et f sont préparés selon les préférences du concurrent ou de la
concurrente. Les dimensions des plaques présentées tiennent
compte d'un rebord aminci et tout espacement des racines doit
être pris en compte dans l'ensemble des dimensions
d'assemblage.

ALL DIMENSIONS IN MILLIMETERS/TOUTES LES DIMENSIONS SONT EN MILLIMÈTRES

TITLE / TITRE:

SKILLS COMPÉTENCES ONTARIO 2025
POST-SECONDARY / POST-SECONDAIRE
BOSS BOX / BOÎTE DE BOSS

**SHEET #
NO. DE PAGE:**
3 OF 3

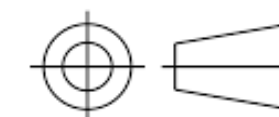
**SIZE /
TAILLE:**
B

**DWG. NO. / NO
DESSIN:**
SOC25-PS1

REV.:
0

**SCALE
ÉCHELLE:**
1:4

**DRAWN BY / DESSINÉ
PAR:** J. HYDE
DATE: 2024-10-15




**SkillsCompétences
Canada Ontario**

3

2

1