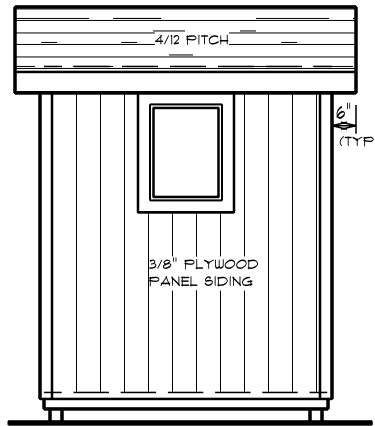
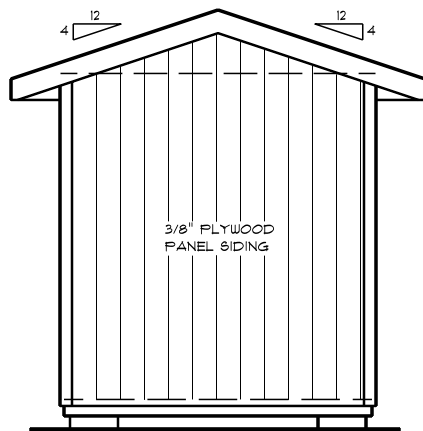
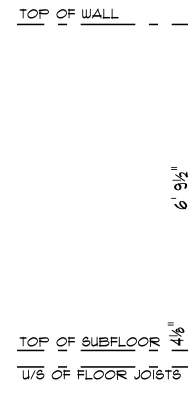


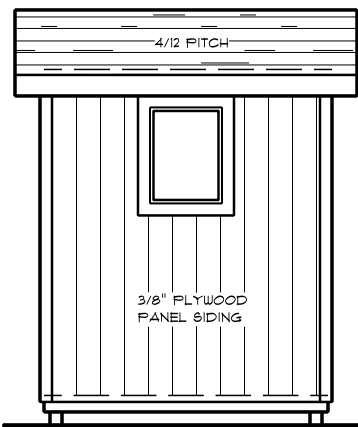
**FRONT ELEVATION** 1/4" = 1'0"  
 March 1, 2019 D.V. 02:24 PM



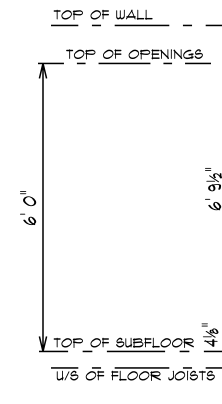
**LEFT ELEVATION** 1/4" = 1'0"  
 March 1, 2019 D.V. 02:24 PM



**REAR ELEVATION** 1/4" = 1'0"  
 March 1, 2019 D.V. 02:24 PM



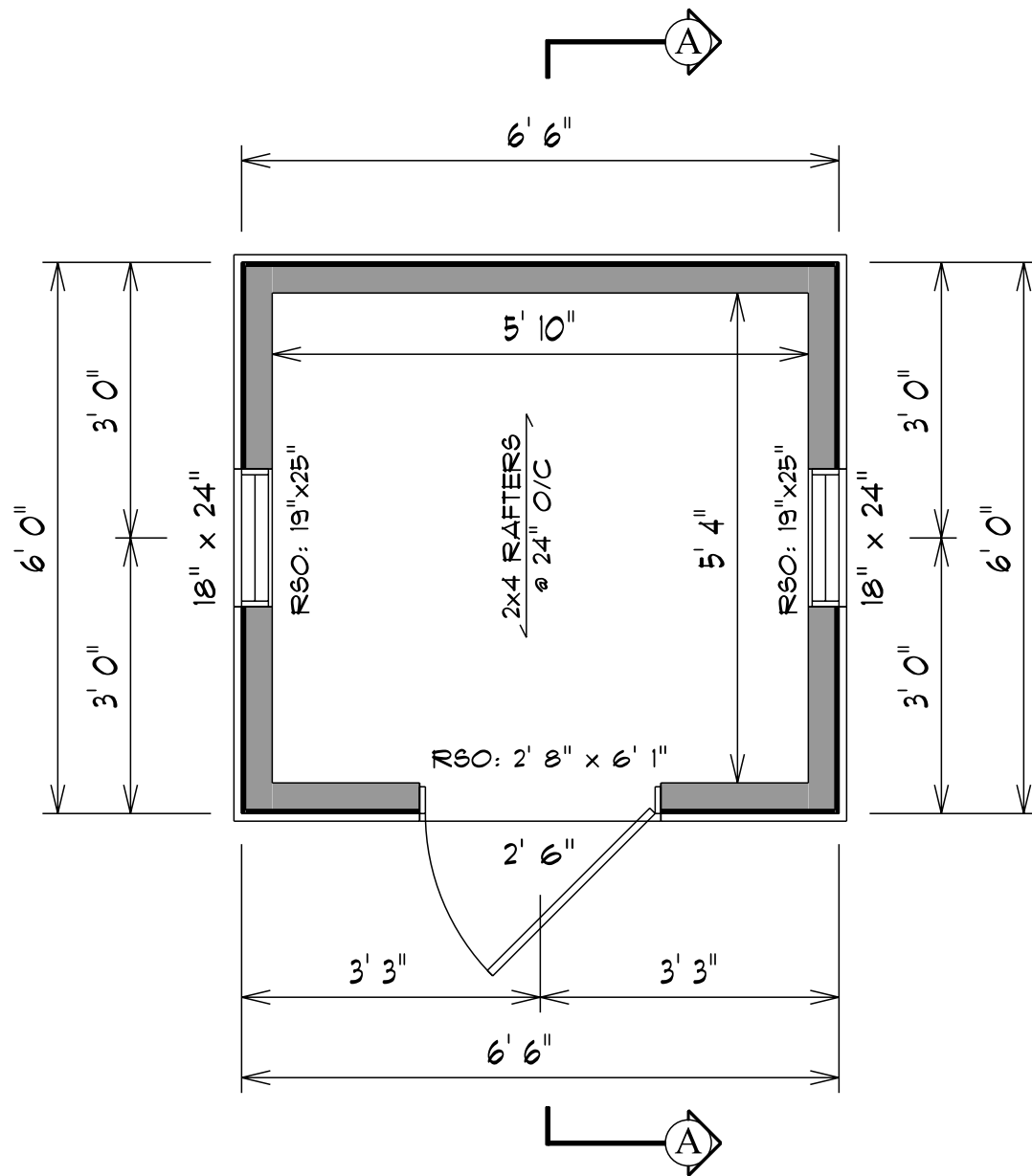
**RIGHT ELEVATION** 1/4" = 1'0"  
 March 1, 2019 D.V. 02:24 PM



**CONSTRUCTION NOTES**

**EXTERIOR:**

- 4" HORIZONTAL VINYL SIDING
- 3" TRIM @ CORNERS
- 3" TRIM AROUND WINDOWS & DOORS
- ASPHALT SHINGLES
- STARTER STRIP AND ALUMINUM DRIP EDGE
- 1x6 FASCIA BOARD
- VINYL SOFFIT



### CONSTRUCTION NOTES

#### FLOOR SYSTEM:

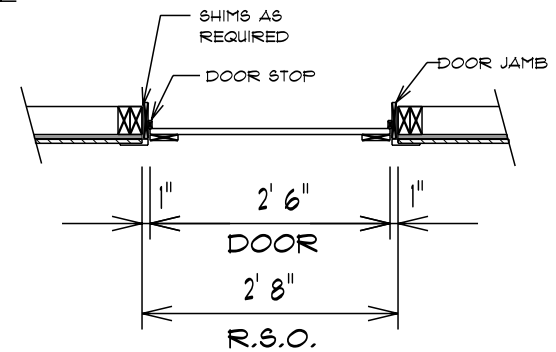
- 2x4 P.T. FLOOR JOISTS @ 16" O/C
- 5/8 TONGUE & GROOVE SUBFLOORING

#### WALLS:

- 2x4 STUDS @ 16" O/C
- 2-2x6 LMITELS ABOVE OPENINGS
- 2x4 BOTTOM PLATE
- 2-2x4 TOP PLATE

#### ROOF:

- 2x4 RAFTERS @ 16" O/C
- 1x4 COLLAR TIES @ 16" O/C
- 7/16" OSB SHEATHING
- 1x6 FASCIA BOARD



### OPENING DETAIL

NOT TO SCALE

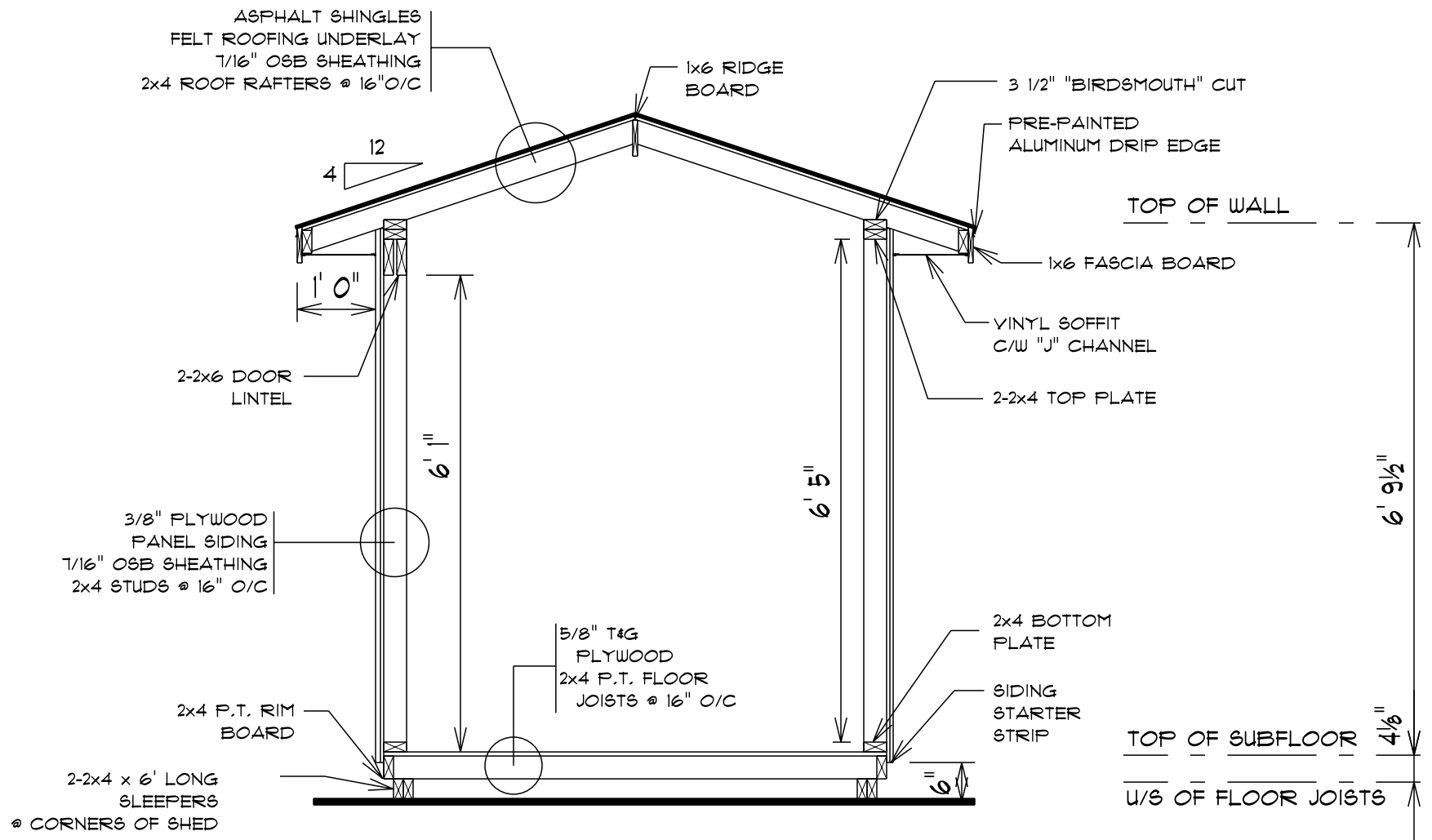
## FLOOR PLAN

1/2" = 1'0"

March 1, 2019

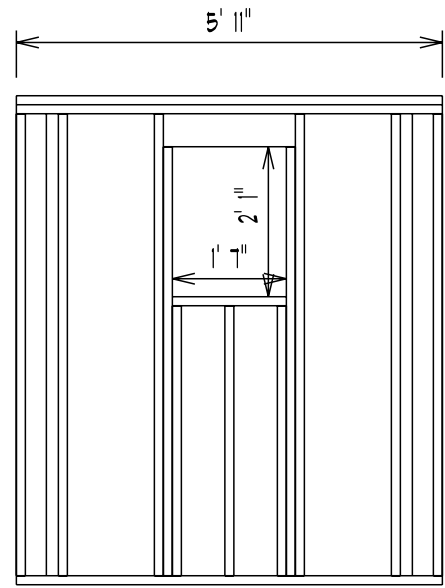
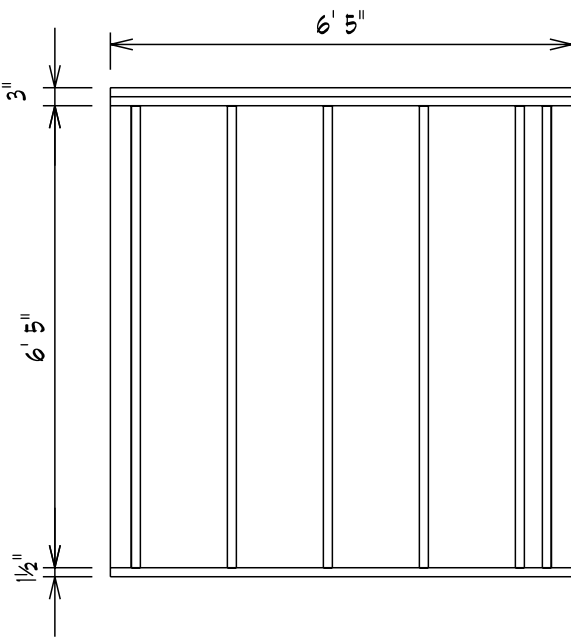
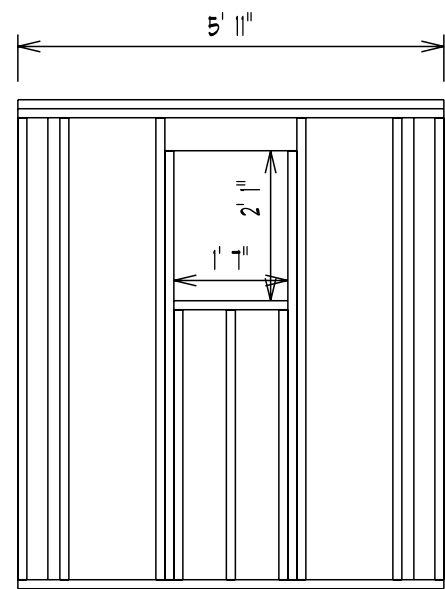
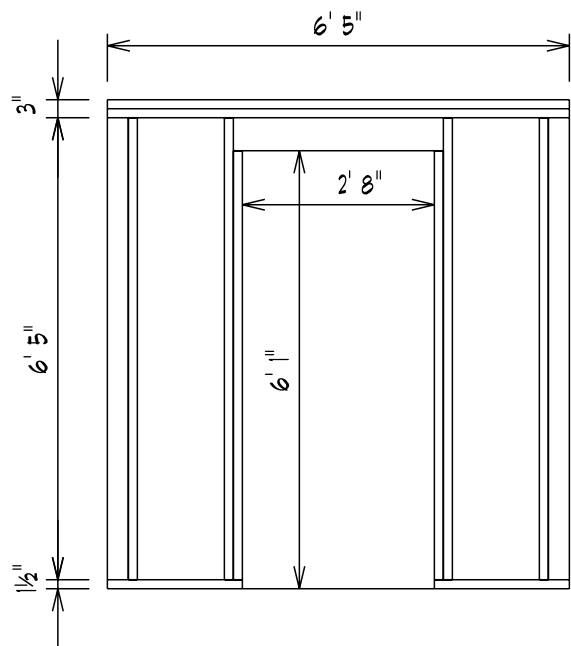
D.V.

02:24 PM



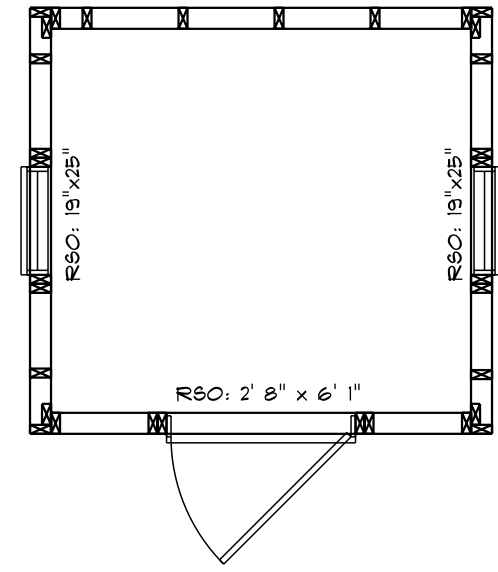
**CROSS SECTION A-A** 1/2" = 1'0"

March 1, 2019 D.V. 02:24 PM



**CONSTRUCTION NOTES**

- WALLS:  
 - 2x4 STUDS @ 16" O/C  
 - 2-2x6 LMITELS ABOVE OPENINGS  
 - 2x4 BOTTOM PLATE  
 - 2-2x4 TOP PLATE



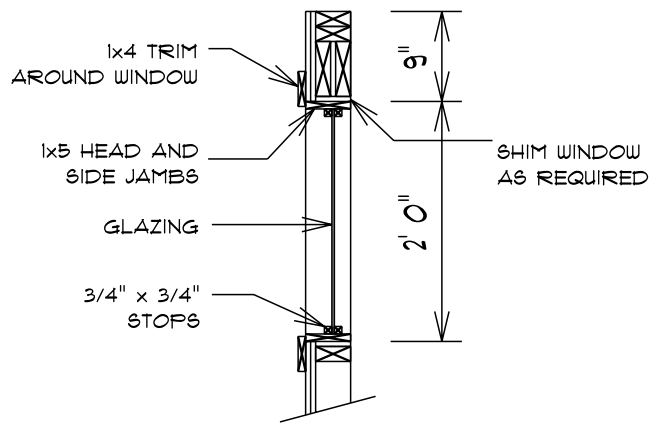
**FRAMING PLAN** 3/8" = 1'0"

March 1, 2019      D.V.      02:24 PM

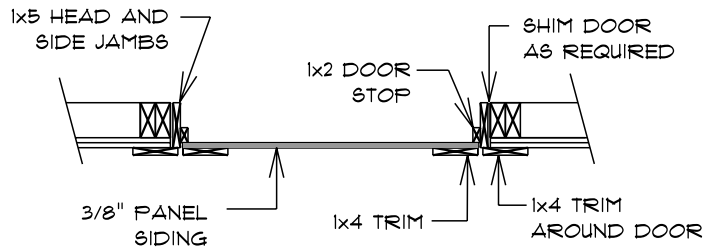
**FRAMING ELEVATIONS** 3/8" = 1'0"

March 1, 2019      D.V.      02:24 PM

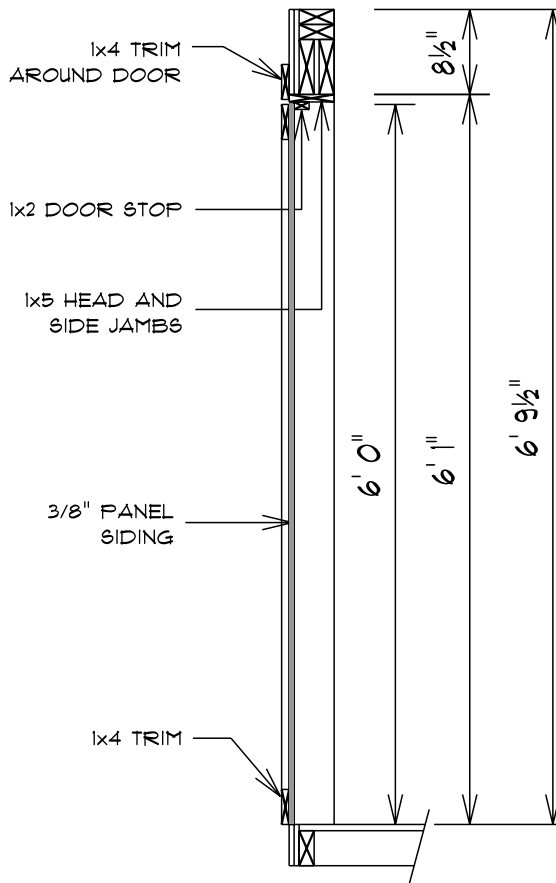
	<b>FRAMING PLAN</b>	<b>PAGE</b>
	DRAFTED BY: NAUTA HOME DESIGNS	<b>4 OF 5</b>



**WINDOW**  
**SECTION DETAIL**  
 N.T.S.



**DOOR**  
**PLAN DETAIL**  
 N.T.S.



**DOOR**  
**SECTION DETAIL**  
 N.T.S.